

# PRODUCT CATALOG 2010

ACUTE CARE ● BARIATRIC ● DIALYSIS

FITNESS ● LONG TERM CARE ● PEDIATRIC / NEONATAL

PRIMARY CARE ● PROFESSIONAL HOME HEALTH ● VETERINARY



Advanced weighing solutions exclusively designed to meet changing demands in healthcare. From infant to adolescent to adult to geriatric care, our products are a smart step in "The Circle of Life".

1-800-815-6615

[www.homscales.com](http://www.homscales.com)

## ITEM • PAGE

100KG	11
100LB	11
142KL	11
160KG	11
160KL	11
160LB	11
175LB	11
222KL	5
349KLX	2, 10
386KGS-01	5, 13
386S-01	5, 13
400KL	14
402KL	14
402LB	14
402KG	14
445KL	9
498KL	2
499KL	2
500KL	2
522KL	4
524KL	4
549KL	4, 13
553KL	4, 13
594KL	9
597KL	3
599KL	3
752KL	3
753KL	3
800KL	10
822KL	10
844KL	10
1100KL	8
1522KL	5
1524KL	5
1600KL	7
2000KL	12
2101KL	8
2210KL	4
2210CART	4, 15
2400KL	6
2500KL	7
2595KL	9
2600KL	7
2610KL	7
2650KL	6
2700KL	6
2842KL	13
7820-000-000	13
YG500R	5

# Health o meter®

## P r o f e s s i o n a l

### CORPORATE HEADQUARTERS CONTACTS

Pelstar, LLC  
11800 South Austin Avenue  
Alsip, IL 60803 USA

Main Number: 1 (708) 377-0600  
Customer Service: 1 (800) 815-6615  
Technical Support: 1 (800) 638-3722  
Fax: 1 (708) 377-0601 or  
1 (800) 654-7330  
Email: [homprocs@homscales.com](mailto:homprocs@homscales.com)  
Website: [www.homscales.com](http://www.homscales.com)

#### Quality

Healthcare professionals and patients have come to recognize the promise of quality and precision that come with a Health o meter® Professional scale--a reputation of reliability that now stretches across nearly a century of daily uses. Health o meter® Professional scales offer a level of quality that's truly unmatched, reliable quality that you can count on from an ISO 13485 certified company like Pelstar, LLC.

#### Value

We understand the importance of a dependable scale. We also understand the rising costs of healthcare and the resulting budget constraints, new technology and your need to save time any way you can, without compromising accuracy. That's why we are committed to offering our customers premium quality, professional scales at the right price.

#### Heritage

Since 1919, Health o meter® Professional scales have been the leading professional scale brand. As a result, nearly every US medical professional and many professionals around the world have used a Health o meter® Professional scale. Our continued success stems from our commitment to innovation, dedication to our customers and nine decades of technical expertise with weighing devices.

#### Pelstar, LLC

Pelstar, LLC, maker of Health o meter® Professional scales, is a certified ISO 13485 company. Trust in the Health o meter® Professional brand inspires physicians and other professionals around the world to use our products every day in clinics, doctor's offices, hospitals, long term care facilities and other healthcare sites. Our medical scales set the standard for superior quality, innovation and better patient care--trustworthy weighing instruments for professional uses throughout the world.

**ISO13485:2003  
CERTIFIED**

Pelstar, LLC has been ISO13485:2003 accredited by complying with all quality and environmental standards for medical devices.

## GLOSSARY

### Auto Off

Digital scale will automatically shut down after a designated period of time, reducing electrical usage and /or increasing battery life.

### Auto Zero

Ability of the scale to show a "0" value automatically when a digital scale is powered up.

### Body Mass Index (BMI)

Statistical measure of the weight of a person, according to their height, A.K.A. Quetelet Index.

### Color

Color refers to the main color of the product shown. Product colors are indicated by B – black, G – grey, LG – light grey, SS – stainless steel (metal material) and W – white.

### Connectivity

Ability of the scale to interface with a computer, monitor, printer or other electronic device via a serial port or USB, to electronically transmit weight, height and BMI depending on the scale and user needs.

### Factory Calibrated

All Health o meter® Professional scales are inspected and pre-calibrated prior to shipment.

### Hold-Release Button

Button on the display that allows the user to "hold" the weight of the patient until it is pressed again to "release" that information. This means a patient can be safely moved off the scale before their weight is actually recorded by the user.

### LB / KG Conversion

Weight can be displayed in either pounds or kilograms while subject remains on the scale. This allows the administrator to conveniently record both readings during one weighing.

### LB / KG Lockout

Safety option built into a scale to allow an administrator to select and use only pounds / inches or kilograms / centimeters for weight / height, eliminating the risk of data being recorded incorrectly.

### Resolution / Readability

Minimum weight change shown on the display when receiving information from the scale.

### Modular Design / Smart Load Cells

State of the art technology exclusive to Health o meter® Professional ProPlus® scales that allows identification and subsequent replacement of individual components or load cells for scale maintenance. This permits identification of repairs and their completion on site, without having to ship the scale back, reducing down time.

### Motion-Sensing Technology

Ability of a scale to perform and weigh accurately, despite movement of the subject on the scale.

### Swivel Display

The display head on most Health o meter® Professional scales will rotate / pivot, for the convenience of the administrator, allowing line-of-sight viewing and information privacy.

### Zero / Tare

Process that allows the user to zero out an initial displayed weight (such as a wheelchair), then do a second weighing with only the weight of the secondary subject being displayed in the second weighing.

## SYMBOLS



### New

Scales bearing this symbol in the catalog have newly been added for this year.



### EMR / EHR Capable

Digital scales bearing this symbol in the catalog provide either serial port or USB connectivity that enable the administrator to 1) electronically store information from the scale, 2) communicate with a peripheral device, and / or 3) interface with spot monitors. Note: proper software development or programming may be required. A software development kit is available, free of charge, to users that want to integrate their Health o meter® Professional scales into their EMR / EHR platform



### CSA / cMet

Products bearing this symbol meet the public safety and quality standards set by the Canadian Standards Association.



### Ships By Truck Only

Scales bearing this symbol in the catalog can only be shipped by a common carrier, not via FedEx nor UPS, due to their size. Please call 800-815-6615 for specific shipping information to your facility.



Certifies that the product bearing this symbol has passed the appropriate European quality assurance tests conducted by a qualified third party. CE stands for fulfillment of the European Directive 93/42 EEC for medical devices and declares the conformity.



Approved Class III scales respect the standards and comply with the Council Directive 90/384 EEC for non automatic scales carrying this symbol. Certificates are available upon request.



### Environmental

No foam in packing and recyclable cardboard packaging.



No foam in packing, recyclable cardboard packaging, biodegradable bag and / or biodegradable shrink wrap used.



Reduced or minimum foam in packaging / recyclable cardboard packaging.



Reduced foam packing, recyclable cardboard packaging, biodegradable bag and / or biodegradable shrink wrap used.

## INDEX • PAGE

### FACILITY TYPE

#### ACUTE CARE

Digital  
3, 4, 7, 8, 9, 10, 12  
Mechanical  
9, 14

#### BARIATRIC

3, 6, 7, 8, 9

#### DIALYSIS

3, 5, 6, 7, 8, 10

#### FITNESS / THERAPY

Digital  
2, 3, 6, 8, 10  
Mechanical  
14

#### LONG-TERM CARE

6, 7, 8, 9, 12

#### PEDIATRIC / NEONATAL

Digital  
4  
Mechanical  
5

#### PHYSICIAN / PRIMARY CARE

Digital  
2, 3, 4, 8, 10  
Mechanical  
5, 11, 14

#### PROFESSIONAL HOME HEALTH

2, 3, 4, 5, 11, 14

#### VETERINARY

13

### OTHER

#### ACCESSORIES

15

#### CHAIR

9

#### EHR / EMR READY

2, 3, 4, 6, 7, 8, 9, 10, 12, 13

#### FLOOR

Digital  
3, 10, 13  
Mechanical  
11

#### HEIGHT ROD

2, 3, 14, 15

#### PORTABLE

2, 3, 4, 5, 6, 10, 11, 13

#### REMOTE DISPLAY

2, 3, 6, 10, 13

#### WHEELCHAIR

6, 7

Key Features	498KL • 499KL • 500KL	349KLX
WEIGHT CAPACITY	500 lb / 220 kg	400 lb / 180 kg
RESOLUTION	0.2 lb / 0.1 kg	0.2 lb / 0.1 kg
PLATFORM SIZE (W x D)	12 3/4" x 15 1/2" / 17 3/4" x 14" (498KL)	12 3/8" x 12"
HEIGHT ROD	30" - 84 1/4" / 76 cm - 214 cm (500KL)	n/a
DISPLAY	1" LCD	1/2" LCD
WHEELS	Yes (499KL and 500KL only)	n/a
BATTERIES (included)	6 AA	9 V
120V ADAPTER (pg. 15)	Optional (ADPT31)	Optional (ADPT40)
LB / KG LOCK OUT	Yes	Yes
PLATFORM MAT	Durable non-skid	Durable non-skid
CONNECTIVITY	USB	Serial Port
CARRYING CASE (pg. 15)	64771 (498KL)	64771
COLOR	G	W
WARRANTY	2 years	2 years

Key Functions		
EMR CAPABLE	Yes	Yes
LB / KG CONVERSION	Yes	Yes
BODY MASS INDEX (BMI)	Yes	No
ZERO OUT / TARE	Yes	Yes
HOLD / RELEASE	Yes	No
AUTO ZERO	Yes	Yes
AUTO OFF	Yes	Yes

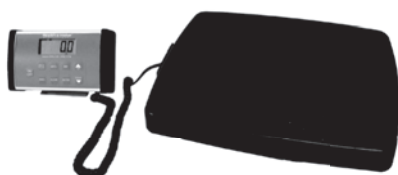
500KL - Eye Level



499KL - Waist High



498KL



498KL Display



PATENT #D565446 (US)

Model	Master Pack	Shipping Dims. (L x W x H) / Cube	Weight (LB)	UPC Code
498KL	1	25.75" x 17.25" x 5.375" / 1.38	16 LB	892076002718
499KL	1	17.25" x 26.5" x 11.25" / 2.98	22 LB	892076002527
500KL	1	17" x 30.13" x 14.5" / 3.41	25 LB	892076002008
349KLX	2	13.25" x 19" x 6.38" / 0.93	22 LB	892076002251

**753KL\***

**NEW** **EMR**

**SP** 

  
NR76/2006-NL-09.11



**NATIONAL CONFERENCE  
ON WEIGHTS AND MEASURES**

CC09-029

\*(NTEP) - Legal for trade scale certified by the National Conference on Weights and Measures. This scale must be Sealed with Professional Stamp before Official or Commercial use.

**752KL**

**EMR**

**SP** 

**752KG**  
Call for more information

**CE**  
0470

  
NR76/2006-NL-09.11




Optional Carrying Case  
for 752KL - item # 64771



Key Features	752KL • 597KL • 599KL • 753KL
WEIGHT CAPACITY	600 lb / 272 kg
RESOLUTION	0.2 lb / 0.1 kg
PLATFORM SIZE (W x D)	14 3/4" x 14 11/16"
HEIGHT ROD	597KL (only) 24" - 84" / 60 cm - 213 cm
DISPLAY	1" LCD w / 350° swivel movement
WHEELS	Yes (597KL and 599KL only)
BATTERIES	6 C-cell (not included)
120V ADAPTER	ADPT50 (included)
LB / KG LOCK OUT	Yes
PLATFORM MAT	Durable non-skid
CONNECTIVITY	USB
CARRYING CASE (pg. 15)	Optional for 752KL (64771)
COLOR	LG
WARRANTY	2 years

Key Functions	752KL • 597KL • 599KL	753KL
EMR CAPABLE	Yes	Yes
LB / KG CONVERSION	Yes	Yes
BODY MASS INDEX (BMI)	Yes	Yes
ZERO OUT / TARE	Yes	Yes
HOLD / RELEASE	Yes	No
AUTO ZERO	Yes	Yes
AUTO OFF	Yes	Yes

**599KL - Waist High**



**599KG**  
Call for more information



NR76/2006-NL-09.11



**597KL - Eye Level**



**597KG**  
Call for more information



NR76/2006-NL-09.11



PATENT #D584649 (US)

Model	Master Pack	Shipping Dims. (L x W x H) / Cube	Weight (LB)	UPC Code
597KL	1	51.18" x 22.44" x 5.11" / 3.40	36 LB	892076002091
599KL	1	39.37" x 21.1" x 5.11" / 2.46	28 LB	892076002107
752KL	1	24.4" x 16.14" x 4.53" / 1.03	18 LB	892076002138
753KL	1	24.4" x 16.14" x 4.53" / 1.03	18 LB	892076002770

Key Features	522KL / 524KL	553KL	549KL	2210KL Neonatal
WEIGHT CAPACITY	50 lb / 23 kg	44 lb / 20 kg	44 lb / 20 kg	45 lb / 20 kg
RESOLUTION	0-20 lb 0.2 oz / 20-50 lb 0.5 oz 0-9 kg/ 5 g; 9-23 kg/ 10 g	0.5 oz / 10 g	0.5 oz / 10 g	0.1 oz / (0 - 11300 g / 1g, >11300g / 5g)
TRAY SIZE (W x D x H)	24 1/16" x 14 1/8" x 3" (522KL)	25" x 13 7/8" x 2"	19 3/8" x 12 1/8" x 2"	24 1/16" x 15 5/16" x 3 1/2"
SEAT SIZE (W x D x H)	18" x 14 1/8" x 18 1/2" (524KL)	n/a	n/a	n/a
MEASURING TAPE	0" - 23" / 0 cm - 58 cm (522KL)	0" - 24" / 0 cm - 58 cm	n/a	0" - 23 3/4" / 0 cm - 60 cm
DISPLAY	1" LCD	1" LCD	0.6" LCD	7/8" LCD
BATTERIES (included)	6 AA batteries	6 AA batteries	9V battery	6 C-cell batteries
ADAPTER (pg. 15)	Optional 120V (ADPT31)	Optional 100-240V (ADPT30)	n/a	n/a
LB / KG LOCK OUT	Yes	Yes	Yes	Yes (g, kg, and lb)
MAINTENANCE	Plastic, easy to clean	Plastic, easy to clean	Plastic, easy to clean	Plastic, easy to clean
MOTION DETECTION	No	Yes	No	Yes
CONNECTIVITY	USB	USB	n/a	n/a
CARRYING CASE (pg. 15)	n/a	Optional (553CASE)	Optional (64769)	n/a
COLOR	G	W	W	LG
WARRANTY	2 years	2 years	2 years	3 years

## Key Functions

EMR CAPABLE	Yes	Yes	No	No
LB / KG CONVERSION	Yes	Yes	Yes	No
LB / GM CONVERSION	No	No	No	Yes
ZERO OUT / TARE	Yes	Yes	Yes	Yes
HOLD / RELEASE	Yes	Yes	No	No
AUTO ZERO	Yes	Yes	Yes	Yes
AUTO OFF	Yes	Yes	Yes	Yes

522KL



524KL



## High Resolution Portable Neonatal Scale

2210KL



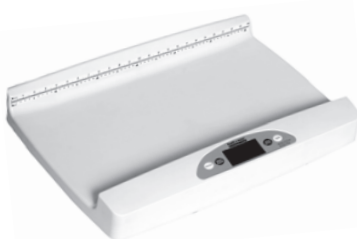
2210KL



2210CART

(Pediatric Rolling Cart can be used with 549KL, 553KL and 2210KL - see page 15)

553KL



549KL



Model	Master Pack	Shipping Dims. (L x W x H) / Cube	Weight (LB)	UPC Code
522KL	1	17.13" x 26.25" x 14.25" / 3.71	23 LB	892076002541
524KL	1	17.13" x 27" x 20.5" / 5.49	26 LB	892076002534
553KL	1	27.75" x 19.13" x 5.25" / 1.61	12 LB	892076002329
549KL	1	21.75" x 15.5" x 6" / 1.17	5 LB	892076002336
2210KL	1	25.75" x 19.5" x 7" / 2.03	30 LB	892076002602
2210CART	1	2 cartons: 26.5" x 18.5" x 9" / 2.55, 22" x 17.75" x 2.5" / 0.56	23 LB, 17 LB	

Key Features	386S01 / 386KGS-01	1522KL / 1524KL	YG500R	222KL
WEIGHT CAPACITY	50 lb (386S01), 25 kg (386KGS01)	130 lb / 65 kg	500 g	11 lb / 5 kg
GRADUATION	1/4 lb (386S01), 100 g (386KGS01)	1 oz / 20 g	2 g	n/a
RESOLUTION	n/a	n/a	n/a	1/4 oz / 1 g
TRAY SIZE (W x D x H)	19 3/8" x 12 1/8" x 2 1/8"	24 1/8" x 14 7/8" x 2 1/2" (1522KL)	6" x 4 3/4" (Platform)	Bowl: 161 cubic in.
SEAT SIZE (W x D x H)	n/a	14 1/2" x 17 1/4" x 18 1/4" (1524KL)	n/a	n/a
MEASURING TAPE	0" - 18" / 0 cm - 46 cm	0" - 23" / 0 cm - 58 cm (1522KL)	n/a	n/a
DISPLAY	n/a	n/a	n/a	1" LCD
BATTERIES	n/a	n/a	n/a	2 - 3 V Lithium
MAINTENANCE	Plastic, easy to clean	Plastic, easy to clean	Rust resistance easy to clean	Stainless Steel easy to clean
MOTION DETECTION	n/a	n/a	n/a	No
CARRYING CASE	n/a	n/a	n/a	n/a
COLOR	W	W	SS	SS
WARRANTY	1 year	2 years	1 year	2 year
Key Functions				
LB / KG CONVERSION	n/a	n/a	n/a	Yes
ZERO OUT / TARE	n/a	n/a	n/a	Yes
AUTO ZERO	n/a	n/a	n/a	Yes
AUTO OFF	n/a	n/a	n/a	Yes



386S01 /  
386KGS01



1522KL



0470



1524KL



0470

## Diaper / Lap Sponge Scales



YG500R  
Mechanical  
Diaper Scale



NEW

222KL  
Digital Wet Diaper /  
Lap Sponge Scale

Model	Master Pack	Shipping Dims. (L x W x H) / Cube	Weight (LB)	UPC Code
386S01	1	16.25" x 21.5" x 6.88" / 1.39	11 LB	892076002305
386KGS-01	1	16.25" x 21.5" x 6.88" / 1.39	11 LB	892076002312
1522KL	1	20.75" x 25.25" x 11.5" / 3.49	35 LB	892076002176
1524KL	1	20.75" x 24.75" x 18.5" / 5.5	44 LB	892076002183
YG500R	6	17.25" x 25" x 10.75" / 2.68	22 LB	077177036019
222KL	4	22.28" x 10.72" x 10.32" / 1.45	8.73 LB	892076002800

Key Features	2400KL	2650KL	2700KL
WEIGHT CAPACITY	800 lb / 360 kg	1000 lb / 454 kg	1000 lb / 454 kg
RESOLUTION	0.2 lb / 0.1 kg	0.2 lb / 0.1 kg	0.2 lb / 0.1 kg
PLATFORM SIZE (W x D)	6" x 40" (Rails)	32 1/4" x 35 3/4"	42" x 43"
RAMP SIZE (W x D)	n/a	10" x 32 1/4"	12 3/4" x 42"
DISPLAY	3/4" LCD	3/4" LCD	3/4" LCD
WHEELS	n/a	Yes (2 wheels)	Yes
BATTERIES (not included)	6 D-cell	6 D-cell	6 D-cell
120V ADAPTER (included)	ADPT31	ADPT31	ADPT31
LB / KG LOCK OUT	Yes	Yes	Yes
PLATFORM MAT	Durable non-skid	Durable non-skid	Durable non-skid
CONNECTIVITY	USB and Serial Ports	USB and Serial Ports	USB and Serial Ports
COLOR	LG	LG	LG
WARRANTY	3 years	3 years	3 years

## Key Functions

EMR CAPABLE	LB / KG CONVERSION	BODY MASS INDEX (BMI)
ZERO OUT / TARE	HOLD / RELEASE	REWEIGH
AUTO ZERO	AUTO OFF	SELF CALIBRATING



2400KL

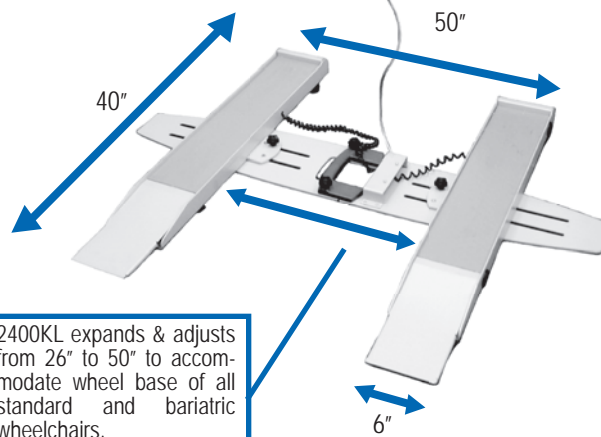


ProPlus®



2650KL (platform: 32 1/4" W x 35 3/4" D)

2700KL (platform: 42" W x 43" D)



2400KL expands & adjusts  
from 26" to 50" to accom-  
modate wheel base of all  
standard and bariatric  
wheelchairs.



0470

2650KG  
Call for more  
information



N-077603-0431



PATENTS #D508655, #7550682B2 (US) PATENTS #ZL200480031711X, #200430004551.2 (PRC)

Model	Master Pack	Shipping Dims. (L x W x H) / Cube	Weight (LB)	UPC Code
2400KL	1	20.75" x 37" x 7" / 3.11	36 LB	892076002695
2650KL	1	39.75" x 43.63" x 7.125" / 7.15	89 LB	892076002442
2700KL	1	55.75" x 51.5" x 11" / 18.28	218 LB	892076002633



Key Features	1600KL	2500KL	2600KL	2610KL
WEIGHT CAPACITY	700 lb / 310 kg	1000 lb / 454 kg	1000 lb / 454 kg	1000 lb / 454 kg
RESOLUTION	0.2 lb / 0.1 kg	0.2 lb / 0.1 kg	0.2 lb / 0.1 kg	0.2 lb / 0.1 kg
PLATFORM SIZE (W x D)	32 3/8" x 36 1/4"	29 1/4" x 28 1/4"	32 3/8" x 36 1/4"	32 3/8" x 36 1/4"
RAMP SIZE	9 7/8" x 32 3/8"	9 7/8" x 28 1/4"	9 7/8" x 32 3/8"	9 7/8" x 32 3/8"
SECONDARY RAMP (pg. 15)	B1600RAMP(optional)	B2500RAMP (optional)	B2600RAMP (optional)	Included
WHEELS	Yes (4 wheels)	Yes (2 wheels)	Yes (4 wheels)	Yes (4 wheels)
DISPLAY	3/4" LCD w/ 180° swivel movement	3/4" LCD w/ 180° swivel movement	3/4" LCD w/ 180° swivel movement	3/4" LCD w/ 180° swivel movement
BATTERIES (not included)	6 D-cell batteries	6 D-cell batteries	6 D-cell batteries	6 D-cell batteries
120V ADAPTER (included)	ADPT31	ADPT31	ADPT31	ADPT31
LB / KG LOCK OUT	Yes	Yes	Yes	Yes
PLATFORM MAT	Durable non-skid	Durable non-skid	Durable non-skid	Durable non-skid
CONNECTIVITY	USB and Serial Ports	USB and Serial Ports	USB and Serial Ports	USB and Serial Ports
COLOR	W	LG	LG	LG
WARRANTY	3 years	3 years	3 years	3 years

## Key Functions

EMR CAPABLE	LB / KG CONVERSION	BODY MASS INDEX (BMI)
ZERO OUT / TARE	HOLD / RELEASE	REWEIGH
AUTO ZERO	AUTO OFF	SELF CALIBRATING



1600KL



2500KL



2500KG  
Call for more information

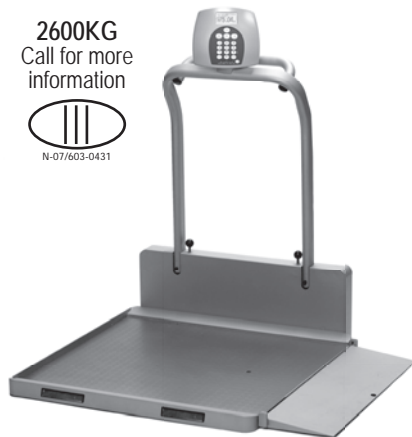


2600KL when folded

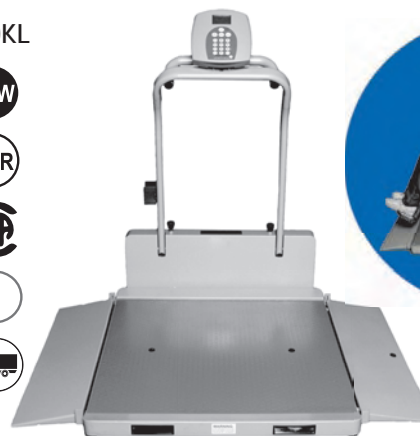
2600KL



2600KG  
Call for more information



2610KL



PATENTS #D508655, #7550682B2 (US)

PATENTS #ZL200480031711X, #200430004551.2 (PRC)

PATENT 2600KL #879864 (PRC)

Model	Master Pack	Shipping Dims. (L x W x H) / Cube	Weight (LB)	UPC Code
1600KL	1	39.25" x 44.75" x 14.75" / 14.99	128 LB	892076002787
2500KL	1	33.25" x 40.75" x 10.5" / 8.23	90 LB	892076002275
2600KL	1	39.25" x 44.75" x 14.75" / 14.99	128 LB	892076002268
2610KL	1	39.25" x 44.75" x 14.75" / 14.99	132 LB	892076002794

Key Features	1100KL	2101KL
WEIGHT CAPACITY	700 lb / 310 kg	1000 lb / 454 kg
RESOLUTION	0.2 lb / 0.1 kg	0.2 lb / 0.1 kg
PLATFORM SIZE (W x D)	22" x 15 3/4"	26" x 22"
HANDRAIL SPACING	27 1/2"	25"
DISPLAY	3/4" LCD w/ 180° swivel movement	3/4" LCD w/ 180° swivel movement
WHEELS	Yes (2 wheels)	Yes (2 wheels)
BATTERIES (not included)	6 D-cell	6 D-cell
120V ADAPTER (included)	ADPT31	ADPT31
LB / KG LOCK OUT	Yes	Yes
PLATFORM MAT	Durable non-skid	Durable non-skid
CONNECTIVITY	USB and Serial Ports	USB and Serial Ports
COLOR	W	LG
WARRANTY	3 years	3 years

Key Functions		
EMR CAPABLE	LB / KG CONVERSION	BODY MASS INDEX (BMI)
ZERO OUT / TARE	HOLD / RELEASE	REWEIGH
AUTO ZERO	AUTO OFF	SELF CALIBRATING



1100KL

- 
- 
- 
- 



2101KL

- 
- 
- 
- 
- 2101KG  
Call for more information
- 



PATENTS #D508655, #7550682B2 (US)  
PATENT 2101KL #D523367 (US)

PATENTS #ZL200480031711X, #200430004551.2 (PRC)  
PATENTS 2101KL #806658, #879866 (PRC)

Model	Master Pack	Shipping Dims. (L x W x H) / Cube	Weight (LB)	UPC Code
1100KL	1	41.89" x 24.65" x 10.43" / 6.23	65 LB	892076002619
2101KL	1	28.63" x 42" x 10.13" / 7.04	82 LB	892076002282



Key Features	445KL	594KL	2595KL
WEIGHT CAPACITY	440 lb / 200 kg	440 lb / 200 kg	600 lb / 270 kg
RESOLUTION	n/a	0.2 lb / 0.1 kg	0.2 lb / 0.1 kg
GRADUATION	1/4 lb / 100 g	n/a	n/a
SEAT SIZE (W x D x H)	18 1/2" x 16 1/2" x 17 1/8"	14 1/2" x 18 1/4" x 17 1/2"	18 1/4" x 15 1/2" x 16 1/2"
DISPLAY	n/a	1 1/4" LCD	1 1/8" LCD
WHEELS	Yes	Yes	Yes
FLIP ARM REST	Yes	Yes	Yes
FOLDING FOOT REST	Yes	Yes	Yes
BATTERIES	n/a	6 V (rechargeable)	6 C-cell (not included)
120V ADAPTER	n/a	Charger (included)	Included
LB / KG LOCK OUT	n/a	Yes	Yes
CONNECTIVITY	n/a	No	USB
MAINTENANCE	Plastic, easy to clean	Plastic, easy to clean	Plastic, easy to clean
MOTION DETECTION	n/a	No	Yes
COLOR	B	B	B
WARRANTY	2 year	2 years	3 years

### Key Functions

LB / KG CONVERSION	n/a	Yes	Yes
ZERO OUT / TARE	n/a	Yes	Yes
AUTO ZERO	n/a	Yes	No
AUTO OFF	n/a	Yes	Yes
FLIP ARM & FOOT REST	Yes	Yes	Yes



- 100% Digital
- Stable, No Shaking

Model	Master Pack	Shipping Dims. (L x W x H) / Cube	Weight (LB)	UPC Code
445KL	1	32.25" x 23.5" x 41.13" / 18.04	81 LB	892076002046
594KL	1	32.25" x 23.5" x 41.13" / 18.04	81 LB	892076002688
2595KL	1	25" x 33.25" x 42" / 19.6	101 LB	892076002626

Key Features	349KLX	800KL	822KL	844KL
WEIGHT CAPACITY	400 lb / 180 kg	397 lb / 180 kg	400 lb / 180 kg	440 lb / 200 kg
RESOLUTION	0.2 lb / 0.1 kg	0.2 lb / 0.1 kg	0.1 lb / 0.05 kg	0.1 lb / 50 g (0.05 kg)
PLATFORM SIZE (W x D)	12 3/8" x 12"	12 1/4" x 12 1/4"	14 1/2" x 11 3/4"	12 5/8" x 12 1/2"
DISPLAY	1/2" LCD	1 1/2" LCD	1 1/2" LCD	1 1/4" LCD
BATTERIES (included)	9 V	1-3 V Lithium	2-3 V Lithium	2-3 V Lithium
120V ADAPTER (pg. 15)	Optional (ADPT40)	n/a	n/a	n/a
LB / KG LOCK OUT	Yes	No	No	No
LB / KG SWITCH	n/a	Yes	Yes	Yes
PLATFORM	Durable non-skid	Textured	Durable	Durable non-skid
CONNECTIVITY	Serial Port	n/a	n/a	USB
CARRYING CASE (pg. 15)	Optional (64771)	Optional (64771)	Optional (64771)	Optional (64771)
COLOR	W	W	W	W
WARRANTY	2 years	1 year	1 year	1 year

Key Functions	349KLX	800KL	822KL	844KL
EMR CAPABLE	Yes	n/a	n/a	Yes
AUTO OFF	Yes	Yes	Yes	Yes
AUTO ZERO	Yes	Yes	Yes	Yes
LB / KG CONVERSION	Yes	No	No	No
ZERO OUT / TARE	Yes	No	No	No

349KLX 349KLX interfaces with leading vital signs monitor, Welch Allyn® Spot Vital Signs® LXi



EMR

Health o meter

WelchAllyn®



349KLX in use on table



349KLX in use on wall

800KL



822KL

NEW



844KL

EMR



Model	Master Pack	Shipping Dims. (L x W x H) / Cube	Weight (LB)	UPC Code
349KLX	2	13.25" x 19" x 6.38" / 0.93	22 LB	892076002251
800KL	4	13.88" x 14.88" x 8.63" / 1.03	19 LB	892076002190
822KL	2	14.5" x 16.375" x 5.22" / 0.7	9 LB	892076002725
844KL	2	14.38" x 15.13" x 5.56" / 0.7	10 LB	892076002404

Key Features	100LB / 100KG	142KL	160KL / 160LB / 160KG	175LB
WEIGHT CAPACITY	270 lb (100LB) 120 kg (100KG)	330 lb / 150 kg	400 lb / 180 kg (160KL) 400 lb (160LB) 180 kg (160KG)	330 lb
GRADUATION	1 lb (100LB) 0.5 kg (100KG)	1 lb / 0.5 kg	1 lb / 1 kg (160KL) 1 lb (160LB) 1 kg (160KG)	1 lb
PLATFORM SIZE (W x D)	10 1/4" x 9 7/8"	9 7/16" x 10 3/8"	11 1/2" x 13"	11 1/2" x 9 7/8"
PLATFORM MAT	Durable non-skid	Durable non-skid	Durable non-skid	Durable non-skid
CARRYING CASE (pg. 15)	Optional (64771)	n/a	n/a	Optional (64771)
COLOR	W	W	W	W
WARRANTY	1 year	1 year	1 year	1 year

100LB & 100KG



Capacity: 270 lb (100LB)  
Capacity: 120 kg (100KG)

142KL



Capacity: 330 lb / 150 kg

175LB



Capacity: 330 lb

160KL, 160LB, 160KG: 8" Dial (Raised 4")

160KL



Capacity: 400 lb / 180 kg

160LB



Capacity: 400 lb

160KG



Capacity: 180 kg

Model	Master Pack	Shipping Dims. (L x W x H) / Cube	Weight (LB)	UPC Code
100LB	3	11.13" x 11" x 7" / 0.5	11 LB	892076002381
100KG	3	11.13" x 11" x 7" / 0.5	11 LB	892076002398
142KL	2	20.13" x 12.5" x 8.5" / 1.24	14 LB	892076002572
160KL	2	17.25" x 15.25" x 22.13" / 3.37	22 LB	892076002367
160LB	2	17.25" x 15.25" x 22.13" / 3.37	22 LB	892076002053
160KG	2	17.25" x 15.25" x 22.13" / 3.37	22 LB	892076002343
175LB	2	12.25" x 11" x 5.63" / 0.44	8 LB	892076002374

Key Features		2000KL
WEIGHT CAPACITY		400 lb / 181 kg
RESOLUTION		0.2 lb / 0.1 kg
STRETCHER (W x D)		70 3/8" x 30 3/8"
DISPLAY		3/4" LCD
WHEELS		Yes (4 wheels)
BATTERIES		6 D-cell (not included)
120V ADAPTER		ADPT31 (included)
LB / KG LOCK OUT		Yes
CONNECTIVITY		USB and Serial Ports
COLOR		LG
WARRANTY		3 years

Key Functions		
EMR CAPABLE	LB / KG CONVERSION	BODY MASS INDEX (BMI)
ZERO OUT / TARE	HOLD / RELEASE	REWEIGH
AUTO ZERO	AUTO OFF	SELF CALIBRATING



2000KL



PATENTS #D508655, #7550682B2 (US) PATENTS #ZL200480031711X, #200430004551.2 (PRC)

Model	Master Pack	Shipping Dims. (L x W x H) / Cube (3 cartons)	Weight (LB) total: 142 LB	UPC Code
2000KL	Stretcher bag	71.75" x 3.5" x 2.5" / 0.36	10 1/2 LB	892076002466
	Lifter	51.5" x 25.75" x 13" / 9.98	86 1/2 LB	
	Electronics	21.25" x 37.25" x 6.75" / 3.11	45 LB	

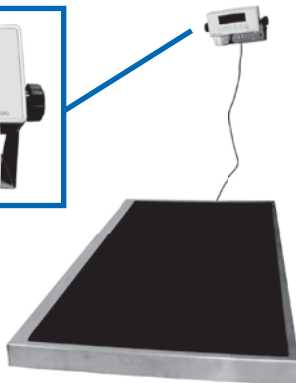
Accessory	386S01 / 386KGS01	553KL	549KL	2842KL
WEIGHT CAPACITY	50 lb (386S01), 25 kg (386KGS01)	44 lb / 20 kg	44 lb / 20 kg	550 lb / 250 kg
RESOLUTION / GRADUATION	1/4 lb (386S01), 100 g (386KGS01)	0.5 oz / 10 g	0.5 oz / 10 g	0.2 lb / 0.1 kg
TRAY SIZE (W x D x H)	19 3/8" x 12 1/8" x 2 1/8"	25" x 13 7/8" x 2"	19 3/8" x 12 1/8" x 2"	42 1/8" x 21 3/4" (platform)
MEASURING TAPE	0" - 18" / 0 cm - 46 cm	0" - 24" / 0cm - 58cm	n/a	n/a
DISPLAY	n/a	1" LCD	0.6" LCD	7/8" LCD
BATTERIES	n/a	6 AA batteries (included)	9V battery (included)	4 AA batteries (not included)
ADAPTER (pg. 15)	n/a	Optional 100-240V (ADPT30)	n/a	Included 120V
LB / KG LOCK OUT	n/a	Yes	Yes	n/a
MAINTENANCE	Plastic, easy to clean	Plastic, easy to clean	Plastic, easy to clean	Stainless steel, easy to clean
MOTION DETECTION	n/a	Yes	No	Yes
CONNECTIVITY	n/a	USB	n/a	Serial
CARRYING CASE (pg. 15)	n/a	Optional (553CASE)	Optional (64769)	n/a
COLOR	W	W	W	SS
WARRANTY	1 year	2 years	2 years	3 years

## Key Functions

EMR CAPABLE	n/a	Yes	No	n/a
LB / KG CONVERSION	n/a	Yes	Yes	Yes
ZERO OUT / TARE	n/a	Yes	Yes	Yes
HOLD / RELEASE	n/a	Yes	No	n/a
AUTO ZERO	n/a	Yes	Yes	n/a
AUTO OFF	n/a	Yes	Yes	n/a



2842KL



386S01 / 386KGS01



222KL  
See page 5 for more information



2210KL  
See page 4 for more information



7820-000-000  
Hanging Scale  
Capacity: 220 lb / 100 kg  
Graduation: 2 lb / 1 kg

553KL



549KL



Model	Master Pack	Shipping Dims. (L x W x H) / Cube	Weight (LB)	UPC Code
386S01	1	16.25" x 21.5" x 6.88" / 1.39	11 LB	892076002305
386KGS01	1	16.25" x 21.5" x 6.88" / 1.39	11 LB	892076002312
549KL	1	21.75" x 15.5" x 6" / 1.17	5 LB	892076002336
553KL	1	27.75" x 19.13" x 5.25" / 1.61	12 LB	892076002329
2842KL	1	49.5" x 24.25" x 4" / 2.78	65 LB	892076002480
7820-000-000	4	10.5" x 21.13" x 4.63" / 0.59	20 LB	022319892022

4002231989020

Key Features	400KL	402KL	402LB	402KG*
WEIGHT CAPACITY	350 lb / 160 kg	500 lb / 200 kg	500 lb	200 kg
GRADUATION	1/4 lb / 100 g	1/4 lb / 100 g	1/4 lb	100 g
PLATFORM SIZE (W x D)	10 1/2" x 14"	10 1/2" x 14"	10 1/2" x 14"	10 1/2" x 14"
HEIGHT ROD	No	23 5/8"-84"/60cm-213 cm	23 5/8"-84"/60cm-213 cm	23 5/8"-84"/60cm-213 cm
WEIGHT BEAM	Rotating dual-read	Rotating dual-read	Non-rotating	Non-rotating
WHEELS (pg. 15)	Optional (55000)	Optional (55000)	Optional (55000)	Optional (55000)
PLATFORM MAT	Non-slip black	Non-slip black	Non-slip black	Non-slip black
ADJUSTMENT SCREW	Yes	Yes	Yes	Yes
BODY	Int./Ext. Powder-Coated Non-rust	Int./ Ext. Powder-Coated Non-rust	Int./Ext. Powder-Coated Non-rust	Int./Ext. Powder-Coated Non-rust
COLOR	W	W	W	W
WARRANTY	10 years	10 years	10 years	10 years

\* Upon special request

**New 10 Year Warranty!**

**Exclusive Engraved Numerals**

**Exclusive rotating poise bar**

**Powder coated inside and out for extended life**

**Easy to read rotating bars**

402KL See page 15



- 55000
- 55070

Optional Wheels Counter weights



0470

Model	Master Pack	Shipping Dims. (L x W x H) / Cube	Weight (LB)	UPC Code
400KL	1	20.25" x 58.5" x 6.5" / 4.46	37 LB	892076002121
402KL	1	20.25" x 58.5" x 6.5" / 4.46	43 LB	892076002015
402LB	1	20.25" x 58.5" x 6.5" / 4.46	42 LB	892076002077
402KG	1	20.25" x 58.5" x 6.5" / 4.46	42 LB	892076002657



# Accessories

Accessory	Description	Used With	Page
B2500RAMP	Secondary ramp for on-off wheelchair movement	2500KL Wheelchair Scale	Pg. 7
B2600RAMP	Secondary ramp for on-off wheelchair movement	2600KL Wheelchair Scale	Pg. 7
B1600RAMP	Secondary ramp for on-off wheelchair movement	1600KL Wheelchair Scale	Pg. 7
ADPT30	100-240V plug-in adapter	553KL	Pg. 4, 13
ADPT31	120V AC plug-in adapter	498KL, 499KL, 500KL, 522KL, 524KL, 1600KL, 1100KL, 2101KL, 2000KL, 2400KL, 2500KL, 2600KL, 2610KL, 2650KL, 2700KL,	Pg. 2, 4, 6-8, 12
ADPT40	120 V AC plug-in adapter	349KLX	Pg. 2, 10
ADPT50	120 V AC plug-in adapter	597KL, 599KL, 752KL and 753KL	Pg. 3
55000 (Wheels)	Placement on Beam scales for portability	400 / 402 Series Beam Scales	Pg. 14
55070 (Counter weights)	Counterweights - beam scales (150 lb / 40 kg added capacity)	All Physician Beam Scales	Pg. 14
64771 (Case)	Carrying case	349KLX, 498KL, 752KL, 100LB / KG, 175LB, 800KL, 844KL, 822KL	Pg. 2, 3, 5, 10, 11
64769 (Case)	Carrying case	549KL	Pg. 4, 13
553CASE	Carrying case	553KL	Pg. 4, 13
PORTROD	Wall mount height rod	Any scales or used seperately	Pg. 15
402KLROD	Metal height rod	400 Series Beam Scales	Pg. 14
WMROD	402KLROD with achors and screws	400 Series Beam Scales	Pg. 14
WMROD KIT	Anchors and screws for 402KLROD	400 Series Beam Scales	Pg. 14
2210CART	Rolling Pediatric Scale Cart	2210KL, 553KL, 549KL	Pg. 4



**64771**  
Carrying case for  
349KLX, 498KL, 752KL,  
100LB / KG, 175LB, 800KL,  
844KL, 822KL, 8320KL



**64769**  
Carrying Case for 549KL



**553CASE**  
Carrying Case for 553KL



- 2210CART** Rolling Scale Medical Cart
- Top shelf has handle for easy grip
  - Can be used with Pediatric scales 549KL, 553KL, and 2210KL
  - Non-conductive wheels / 2 wheels with locks
  - Cart Dimensions: 26 1/2" (w) x 18" (d) x 34 1/8" (h)
  - Lockable cabinet: 23" (w) x 16 3/4" (d) x 17" (h)
  - Storage Shelf is easy to clean durable blue plastic
  - 1 Year Limited Warranty
- (For shipping dimensions see page 4)



**PORTROD**  
Wall Mounted Height Rod  
can be used with any scales  
or seperately

**402KLROD**  
Metal Height Rod for  
400 Series Beam Scales



**55000**  
Optional Wheels for  
400 Series Beam Scales



**55070**  
Counter Weights for  
400 Series Beam Scales

# Health o meter®

P r o f e s s i o n a l

www.homscales.com

## LIMITED WARRANTY

### What does the warranty cover?

Pelstar, LLC scales are warranted from date of purchase against defects of materials or in workmanship for a period of one (1), two (2) or three (3) year(s) – see product listing for a warranty period. If product fails to function properly, return the product, freight prepaid and properly packed to Pelstar. If manufacturer determines that a defect of material or workmanship exists, customers' sole remedy will be repair or replacement of scale at no charge. Replacement will be made with a new or remanufactured product or component. If the product is no longer available, replacement may be made with a similar product of equal or greater value. All parts including repaired and replaced parts are covered only for the original warranty period.

### Who is covered?

The original purchaser of the product must have proof of purchase to receive warranty service. Pelstar dealers or distributors selling Pelstar products do not have the right to alter, or modify or any way change the terms and conditions of this warranty.

### What is excluded?

Your warranty does not cover normal wear of parts or damage resulting from any of the following: negligent use or misuse of the product, use on improper voltage or current, use contrary to the operating instructions, abuse including tampering, damage in transit, or unauthorized repair or alternations. Further, the warranty does not cover Acts of God, such as fire, flood, hurricanes and tornadoes. This warranty gives you specific legal rights, and you may also have other rights that vary from country to country, state to state, province to province or jurisdiction to jurisdiction.

### How to receive warranty service?

Make sure you keep your sales receipt or document showing proof of purchase. Make a note of your scale's serial number. Call 1-800-638-3722 to receive a return authorization (RA), which must be included on your shipping label. Attach proof of purchase to your defective product along with your name, address, daytime telephone number and description of the problem. Carefully package the product and send with shipping and insurance prepaid to:

Pelstar LLC  
Attention R/A# \_\_\_\_\_  
Repair Department  
11800 Austin Avenue, Unit B  
Alsip, IL 60803 USA

If scale is not covered by warranty, or has been damaged, an estimate of repair costs or replacement costs will be provided to you for approval, prior to servicing or replacing.

## PRICING / RETURNS

### Prices:

All prices are F.O.B. Factory, Alsip, Illinois. This price list supersedes all previous price lists. Prices are subject to change with written notice from Pelstar, LLC.

### Returns:

No returns will be accepted without prior written Pelstar, LLC authorization. Contact Returned Goods Department (1-800-815-6615) for Return Authorization (RA). All authorized returns must be in original packaging or equivalent and must be shipped to the factory FREIGHT PREPAID. Note: Return Authorization number must appear near the shipping label, on the outside of the shipping box. Floor model scales must be packaged 12 maximum per carton only. Professional and personal waist high scales must be packed 1 maximum per carton only.

### Restock Charges:

NO CHARGE	Scale is returned due to Pelstar, LLC error
5%	Order placed is incorrect. Replacement scale is ordered.
10%	Order placed is incorrect and scale is refused on delivery. Replacement model is not ordered.
20%	Scale carton has been opened and unit has been used. Unit returned is in a resalable condition and returned within 30 days of purchase.

Credit or replacement will not be issued for product beyond warranty coverage. Pelstar, LLC shall have the sole right to determine if merchandise is defective and whether credit or replacement will be issued.

Main Number: 1 (708) 377-0600  
Customer Service: 1 (800) 815-6615  
Technical Support: 1 (800) 638-3722  
Fax: 1 (800) 654-7330 &  
1 (708) 377-0601  
Email: homprocs@homscales.com  
Web site: www.homscales.com

**ISO13485:2003  
CERTIFIED**

# ProPlus® Scale Solutions



- Lowest cost of ownership
- EMR connectivity via USB and Serial Port
- Capacity: 400 lb - 1000 lb (varies by scale)
- Digital load cells, factory calibrated
- Self calibrating, no test weights required
- 3/4" LCD display
- Body Mass Index (BMI)
- LB / KG Conversion
- LB / KG Lockout
- Zero Out / Tare
- Hold / Release
- Reweigh
- Auto Zero
- Auto Off

The 2600KL Health o meter® Professional ProPlus® scale includes innovative features to improve weighing accuracy while reducing operation time and risk of injury to patient, care giver or scale operator.

For more information about our full line of ProPlus® scales visit our website.



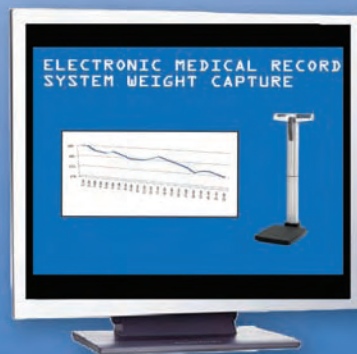
**ProPlus®**

Look for the ProPlus® logo or see catalog pages 6, 7, 8, and 12 for your ProPlus® Scale Solutions.

Call toll free 1-800-815-6615  
**Health o meter®**  
Professional  
[www.hom scales.com](http://www.hom scales.com)

# Health o meter®

P r o f e s s i o n a l



## EMR Integration Kit

This innovative software tool provides seamless Communication between Electronic Medical Record (EMR) System applications and industry leading Health o meter® Professional Medical Scales.

### Features include:

- Launches from inside EMR applications
- Adds weight to the list of critical vital signs available directly from within the EMR
- Works with all Health o meter® Professional EMR capable scales

Maximize the impact of your EMR and Health o meter® Professional investments!

Health o meter® Professional is the industry leader in medical scales providing advanced innovations and the highest level of quality and accuracy since 1919.

### EMR System Integration Kit Includes:

- Software
- Full Documentation
- User Training Materials and information
- User License
- Information about developer support

Automatic vital signs acquisition, including weight, helps close a potential source of medication errors caused by incorrectly recording weight.

### EMR Integration Kit



Call for a Free EMR Kit 800-815-6615

## Our Mission Statement

*Health o meter® Professional is dedicated to providing health professionals with the best weighing scales. We will do everything possible to make it easy for our customers to do business with us.*

We will accomplish our mission by providing our customers with:

**Innovative products** – among other innovations, we are the only company in the industry to use “smart” load cells.

**Exceptional value** – we understand the cost pressures in the healthcare industry, and as such, we have continued to offer the best competitive pricing and freight programs.

**Highest Quality** – we are a certified ISO-13485:2003 company. This ISO certification is designed specifically for medical device companies.

**Excellent service** – most orders ship the same or next day after received. We do not require order minimums, thus reducing our customer’s inventory. We will drop ship as requested by our customers.

In short, we are 100% focused on products used by healthcare professionals.