



Medical LED Illumination  
Surgical LED Light  
**Luvis** Ceiling

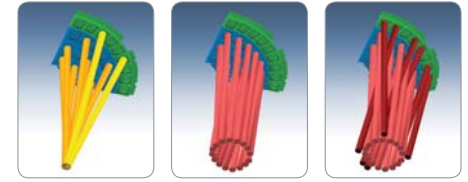
# Luvis L200



## Stable Illumination

Luvis L200 delivers stable illumination even for a long time use. Only 2% intensity drop after 12 hours continuous use. With Patented CIS (Channel Illumination System), the intensity is maintained despite of Focus size.

- **CIS (Channel Illumination System)**
  - ▶ Channel illumination technology helps to prevent large falling of intensity as enlarging the pattern size.
  - ▶ Only 5% of difference will come as the pattern size enlarged while many others show 50% of intensity falling.
  - ▶ Channel illumination technology will help the surgeon to have stable well-lit

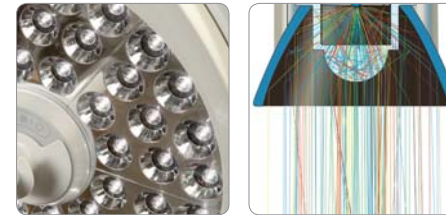


circumstance

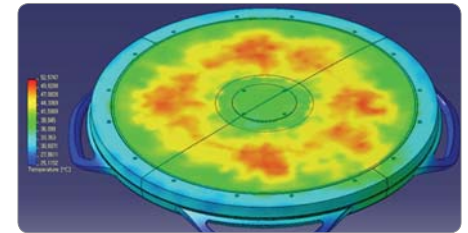
## Effective Illumination

By Adopting Hybrid LED Reflector, the efficiency of the illumination is maximized. With high efficiency, Luvis LED light minimize the heat emission.

- **Hybrid LED System**  
Hybrid optical system delivers energy saving performance which directly link to lower heat emission. Hybrid optical system enables more various function such as color temperature change and focal size change even with less consumption of energy and heat. 30% higher efficiency comparing to normal reflector and less weighted solution comparing to lens system



- **Cool Light**  
LED technology lets Luvis L200 keep cool. Operating theatre light should detain the irradiation of light as the heat dry up the affected part. Standard recommends not to exceed 1000W/m<sup>2</sup> but all of LUVIS surgery lights irradiate far less than the standard requests Minimum heat emission will protect patients' wounds during the surgery.



## Excellent Optical Performance

- **Dilution Effect**  
All Medical lights have tested the dilution test to ensure the proper dilution performance which is highly crucial for performance of medical surgery. Luvis L200 have excellent dilution effect comparing to any other existing medical illuminations.

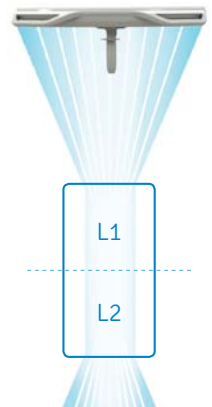
▶ Luvis-L200 : 75%~100%

Dilution Effect	With Tube(%)	100
1 mask(%)	75	
2 mask(%)	60	



- **Depth of Illumination**  
The distance between the point of maximum intensity of illumination at the center of the illuminated field (1 meter from the surface emission of light) and the detection of the value of 20% of the maximum intensity of illumination, measuring in the direction of the emission surface (L1) that in the opposite direction (L2). These values, added together (L1 + L2), gives the depth of illumination without the need to refocus. A higher level of illumination depth is very important especially in cases of narrow and deep wound channels

- Luvis-L200 delivers excellent depth of illumination
  - ▶ Ec x 60% : 85cm
  - ▶ Ec x 20% : 150cm



# L200 / L200

160,000 Lux + 160,000Lux



## Synchronized Intuitive Control Panel

touch sensor control



**Illumination Intensity**  
160,000Lux (Max.)

**Focus Size**  
6 steps adjustment  
(Max. 30cm / Min. 20cm)

**Color Temperature**  
3,800K / 4,300K / 4,800K

**ENDO-MODE**  
Suitable for endo-surgery by one click, EC\*5%

## HD Camera (Option)



**320° Rotating Arm**  
With HD Camera

**360° Rotating Arm**

**Hybrid LED System**  
Lower heat emission & Less consumption of energy



**Center Grip**  
Quick controller & Autoclavable handle



**Smart Sensor**  
Detect the obstacle & Increase the intensity automatically

Installation Guide Video



Model	Code No.
L/L200	L2-MAS1000

## Other Configuration



HD Camera

Camera Block	FCB-EV7100
Image Sensor	1 / 2.8 - Type CMOS
Lens	10x optical zoom
	f = 3.8 mm (wide) to 38 mm (tele) F1.8 to F3.4
Picture Quality	Full HD 1080p (1920 *1080)
Digital Zoom	12x (120x with optical zoom)
Output	HD SDI
Resolution	2.34Mega Pixel



Wall Mount Box

Classification	Description
Box Size	WxLxD=30x40x15cm
Control Box Material	Stainless
Number of controlled unit	1 or 2
Switch Type	Touch

Classification	Description
Range of wireless Com.	<10m
Protocol of Wireless Com.	IEEE802.15.4 (ISM 2.4GHz)
Input Voltage	220VAC, 50/60Hz
Out put Voltage	28VDC x 2

# Luvis M300 / M310 M200 / M210



M300/M310



M200/M210

## Stable Illumination

M300 and M200 delivers stable illumination even for a long time use. Only 2% intensity drop after 12 hours continuous use.

## Effective Illumination

By Adopting Hybrid LED Reflector, the efficiency of the illumination is maximized. With high efficiency, Luvis LED lights minimize the heat emission.

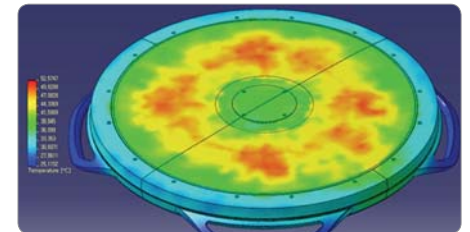
### • Hybrid LED System

Hybrid optical system delivers energy saving performance which directly link to lower heat emission. Hybrid optical system enables more various function such as color temperature change and focal size change even with less consumption of energy and heat. 30% higher efficiency comparing to normal reflector and less weighted solution comparing to lens system



### • Cool Light

LED technology lets Luvis M300 and M200 keep cool. Operating theatre light should detain the irradiation of light as the heat dry up the affected part. Standard recommends not to exceed 1000W/m<sup>2</sup> but all of LUVIS surgery lights irradiate far less than the standard requests Minimum heat emission will protect patients' wounds during the surgery.



## Excellent Optical Performance

### • Dilution Effect

All Medical lights have tested the dilution test to ensure the proper dilution performance which is highly crucial for performance of medical surgery. Luvis M300/M200 have excellent dilution effect comparing to any other existing medical illuminations.

- ▶ Luvis M300 : 55~100%
- ▶ Luvis M200 : 50~100%

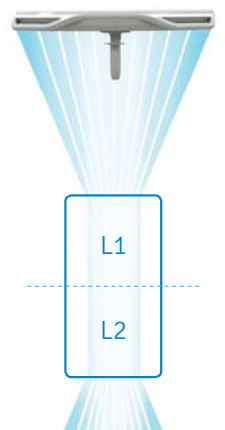
	Model No.	M300	M200
	With Tube(%)	100	100
Dilution Effect	1 mask(%)	55	50
	2 mask(%)	52	48



### • Depth of illumination

The distance between the point of maximum intensity of illumination at the center of the illuminated field (1 meter from the surface emission of light) and the detection of the value of 20% of the maximum intensity of illumination, measuring in the direction of the emission surface (L1) that in the opposite direction (L2). These values, added together (L1 + L2), gives the depth of illumination without the need to refocus. A higher level of illumination depth is very important especially in cases of narrow and deep wound channels

- Luvis M300 and M200 delivers excellent depth of illumination
- M300 ▶ Ec x 60% : 85cm
- ▶ Ec x 20% : 150cm
- M200 ▶ Ec x 60% : 65cm
- ▶ Ec x 20% : 125cm



# M300 / M200

160,000 Lux + 120,000Lux



## Synchronized Intuitive Control Panel

touch sensor control



**Illumination Intensity**  
160,000Lux (Max.)

**Focus Size**  
6 steps adjustment  
(Max. 30cm / Min. 20cm)

**Color Temperature**  
3,800K / 4,300K / 4,800K

**ENDO-MODE**  
Suitable for endo-surgery by one click, EC\*5%

## Center Grip

Quick controller & Autoclavable handle



M200/M210

M300/M310

360° Rotating Arm

## Smart Sensor

Detect the obstacle & Increase the intensity automatically



## Hybrid LED System

Lower heat emission & Less consumption of energy



## Other Configuration



Model	Code No.
M/M300	M3M3-SAD1000
M/M310	M3M3-MAD1000



Model	Code No.
M300	M3-SAS1000
M310	M3-MAS1000



Model	Code No.
M200	M2-SAS2000
M210	M2-MAS2000



Model	Code No.
M/M200	M2M2-SAD2000
M/M210	M2M2-MAD2000

Installation Guide Video



Model	Code No.
M300/M200	M3M2-SAD7000
M310/M210	M3M2-MAD7000

# L200 / M200

160,000 Lux + 120,000Lux



## Synchronized Intuitive Control Panel

touch sensor control



**☀️ Illumination Intensity**  
160,000Lux (Max.)

**📏 Focus Size**  
6 steps adjustment  
(Max. 30cm / Min. 20cm)

**🌈 Color Temperature**  
3,800K / 4,300K / 4,800K

**ENDO ENDO-MODE**  
Suitable for endo-surgery by one click, EC\*5%

## Smart Sensor

Detect the obstacle & Increase the intensity automatically



Installation Guide Video



Model	Code No.
L/M200	L2M2-DAD7000
L/M210	L2M2-DAD7100



L200

M200/M210

360° Rotating Arm

## Hybrid LED System

Lower heat emission & Less consumption of energy



## Center Grip

Quick controller & Autoclavable handle



## Other Configuration



Model	Code No.
L201M	L2-MBM5000



Model	Code No.
M201M	M2-SBM5000
M211M	M2-MBM5000



Model	Code No.
M301M	M3-SBM5000
M311M	M3-MBM5000



# S200

100,000 Lux + 100,000Lux



## Intensity Control in 5 Steps



**Illumination Intensity**  
100,000Lux (Max.)

**Color Temperature**  
3,800K / 4,300K / 4,800K



## Adjustable Focus

Select focal size easily from 18cm to 30cm

## Detachable Handgrip

Easy and stable handling  
autoclavable material



Installation Guide Video



## Other Configuration



Model	Code No.
S200 MOBILE	PL2S10-002A1(S200)









Model	Code No.
S200 CEILING	PL2S40-002D0(S200)

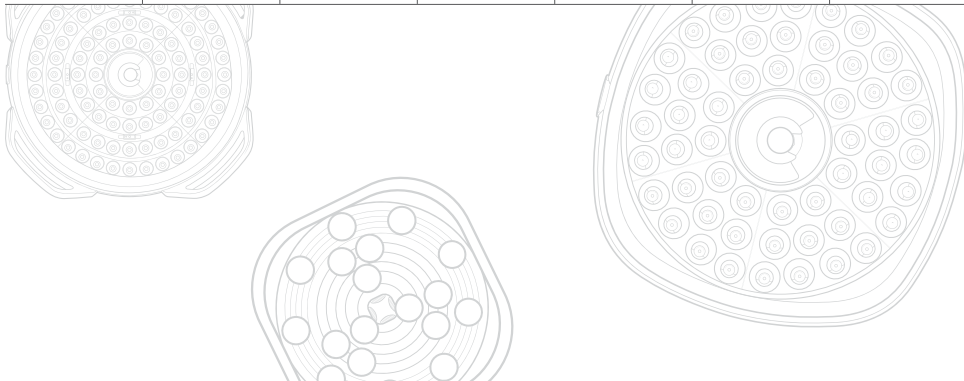


Model	Code No.
S200 WALL	PL2S30-002C0(S200)

Model	Code No.
S200 DUAL CEILING	PL2S50-002E0(S200)

# Technical Specification

Class.	L200	M310	M300	M210	M200	S200
Design(Light Head)						
Installation	Ceiling / Dual Ceiling/Mobile	Ceiling / Dual Ceiling/Mobile	Ceiling / Dual Ceiling/Mobile	Ceiling / Dual Ceiling/Mobile	Ceiling / Dual Ceiling/Mobile	Ceiling / Dual Ceiling/Mobile
Head size(cm)	67cm	60cm	60cm	50cm	50cm	35cm x 34cm
No. of LED(ea)	96	84	84	54	54	18
Intensity(LUX)	Max 160,000LUX at 1 M	Max 160,000LUX at 1 M	Max 160,000LUX at 1 M	Max 120,000LUX at 1 M	Max 120,000LUX at 1 M	Max 100,000LUX at 1 M
Intensity Control	6steps (40,000LUX ~ 160,000LUX)	6steps (40,000LUX ~ 160,000LUX)	6steps (40,000LUX ~ 160,000LUX)	6steps (40,000LUX ~ 120,000LUX)	6steps (40,000LUX ~ 120,000LUX)	5steps (5,000LUX ~ 100,000LUX)
C.R.I(Ra)	96	96	95	95	95	90
Color Temp.(K)	3,800/4,300/4,800	3,800/4,300/4,800	4,300	3,800/4,300/4,800	4300	3,800/4,300/4,800
Light field size(ø)	20cm~30cm at 1M	20cm~30cm at 1M	20cm~30cm at 1M	20cm~30cm at 1M	20cm~30cm at 1M	18cm or 30cm at 1M
Depth of illumination	150cm(at20%) 85cm(at60%)	150cm(at20%) 85cm(at60%)	150cm(at20%) 85cm(at60%)	125cm(at20%) 60cm(at60%)	125cm(at20%) 60cm(at60%)	92cm(at 60%)
Smart sensor(*1)	4ea	4ea	4ea	No	No	No
Detachable Centre grip	Yes(2X)	Yes(2X)	Yes(2X)	Yes(2X)	Yes(2X)	Yes(2X)
LED Life	50,000Hrs	50,000Hrs	50,000Hrs	50,000Hrs	50,000Hrs	50,000Hrs
(option)built-in Camera	Adoptable	Adoptable	Adoptable	Adoptable	Adoptable	No
(option)Wall controller	Adoptable	Adoptable	Adoptable	Adoptable	Adoptable	No
(option)Backup battery	Adoptable	Adoptable	Adoptable	Adoptable	Adoptable	No
Certificate	CE/FDA/CSA	CE/FDA	CE/FDA	CE/FDA/CSA	CE/FDA/CSA	CE/FDA/CFDA/CSA





[www.luvis.co.kr/eng/](http://www.luvis.co.kr/eng/)



**Head Office**

99, Seongseoseo-ro, Dalseo-gu, Daegu, Korea Tel 053-583-2804 / Fax 053-583-2806

**Seoul Office**

286, Beotkkot-ro, Geumcheon-gu, Seoul, Korea

**Overseas Branch**

U.S.A +1-323-677-4363~5 Taiwan +886-2-2808-5933

©2017 DENTIS CO.,LTD. All Right Reserved.

Trademarks are the property of DENTIS CO., LTD. Or their respective owners.

Specifications are subject to change without notice.

Company Introduction



D-C-LVSC-L-V1-201701-ENG